



SATYAM CRESCENT

PLOT 04, SECTOR 01, DAPOLI - PUSHPAK,
NAVI MUMBAI.

*Your dream home
waiting for your arrival*





Project FEATURES

- | Clear title CIDCO transfer plot
- | Ground + 6 Storey Residential project
- | Exclusive 1BHK Flats
- | Quality construction with
Earthquake resistance RCC structure
- | Excellent planning with no wastage in all rooms
- | Taste-fully designed entrance & floor lobbies
- | Reputed make Elevators
- | Ample space on Ground floor
for Parking
- | Loans available & approved by major
Financial Institutions & Banks



Project AMENITIES

FLOORING

- » Vitrified flooring tiles in all the rooms

KITCHEN

- » Black Granite kitchen platform with stainless steel sink

WINDOWS

- » Powder coated Aluminum sliding windows with glass in living room, bedroom & kitchen

WALL FINISH

- » Internal walls painted in semi Acrylic paint
- » External walls coated with Acrylic paint

ELECTRICAL

- » Concealed Copper wiring with reputed brand Modular Switches, telephone & T.V. (Cable) points in living & bedroom

BATH / WC

- » Concealed plumbing with good quality sanitary fittings with PVC plumbing fittings
- » Glazed tiles up to full height
- » Ceramic tiles flooring in bath & WC
- » Good quality aluminum louvers in bath & WC
- » Hot & Cold water mixer point
- » One Wash Basin

DOOR

- » Main door with decorative laminated finish & internal wooden doors
- » Marble frame for all the doors of bath & WC
- » Wooden door frames for all rooms
- » Main door with good quality night latch, heavy duty airdrop, safety chain, peephole & decorative handle

Water Tank

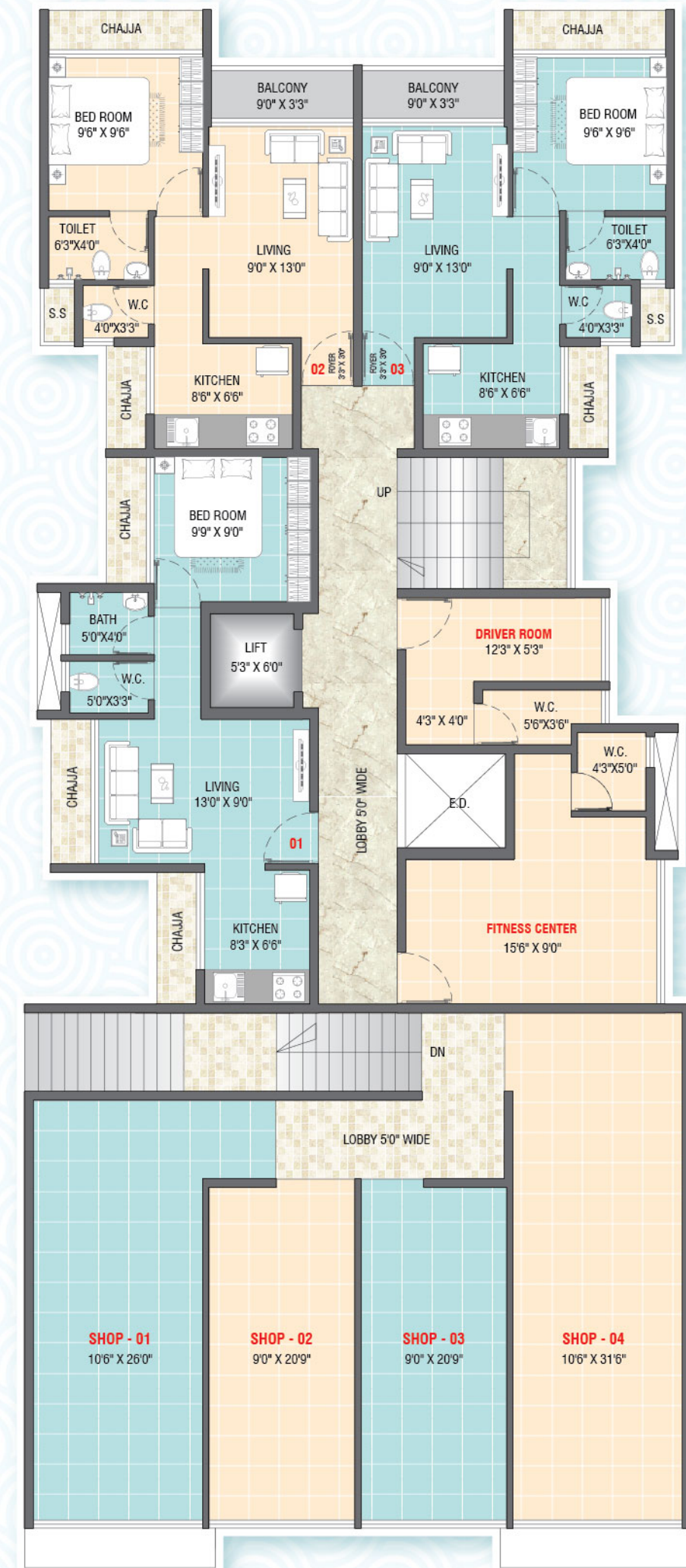
- » Underground & overhead tank with adequate storage capacity

Terrace

- » Special water proofing treatment with china chips

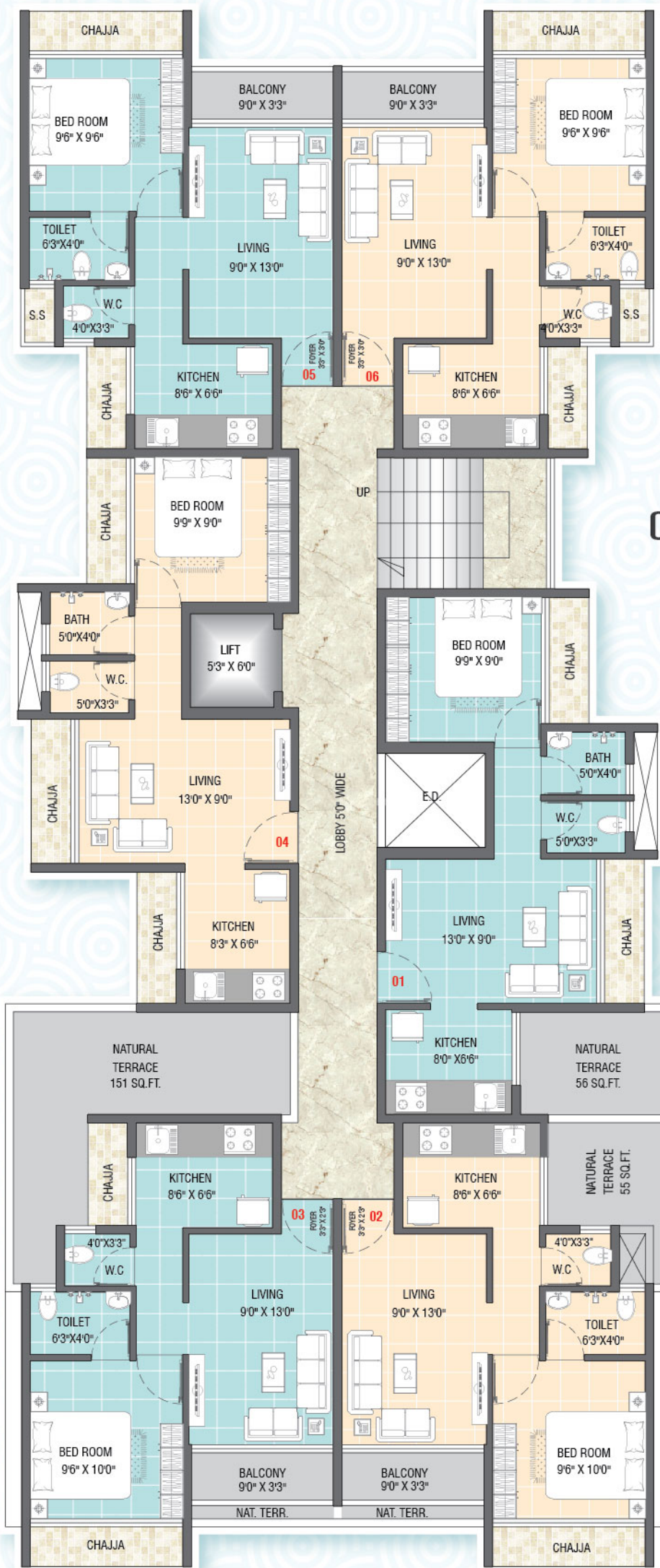


GROUND FLOOR PLAN



1ST FLOOR PLAN





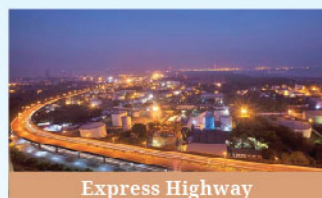
2ND FLOOR PLAN



3RD TO 5TH FLOOR PLAN



6TH FLOOR PLAN



THE LOCATIONAL FEATURES

- | Nearby Navi Mumbai International Airport
- | 10 min. drive from S.T. Bus Depot & Panvel Rly. Stn.
- | 7 min. drive from Khandeshwar Rly. Stn.
- | Nearby Karnala Sports Club and surrounded by Schools, Colleges, Hospitals & Restuarants etc.
- | The Sweri-Nhava Sheva Sea Link will connect Karanjade (Panvel) to Mumbai city in 20 min.



Office: B-1107, Mahavir Icon, Plot No-89 & 90, Sector-15, CBD - Belapur, Navi Mumbai - 400614

Website: www.satyambuilders.co

Email: satyamgroup808@gmail.com

Contact:

9967976138 / 7666555990

9773610001 / +91-22-27563131



MahaRERA No. P50000000000
Website <https://maharera.mahaonline.gov.in>